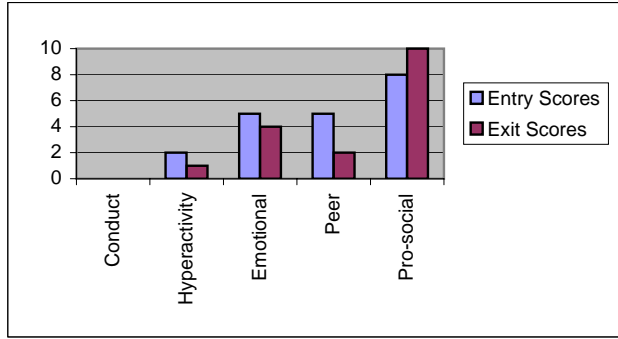


SDQ RESULTS:

Based in a Local Primary School

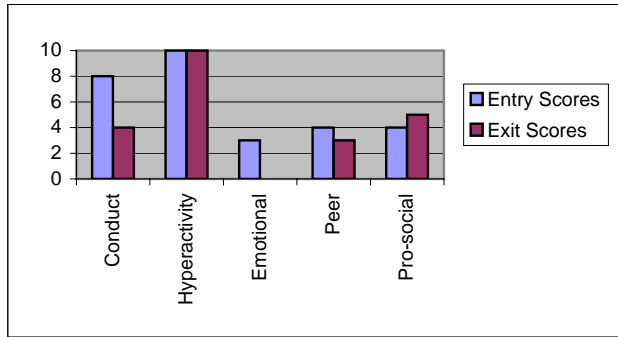
CHILD 1

	Entry Scores	Exit Scores		
Conduct	0	0		
Hyperactivity	2	1		
Emotional	5	4		
Peer	5	2		
Pro-social	8	10		
Attendance	16	=	94%	



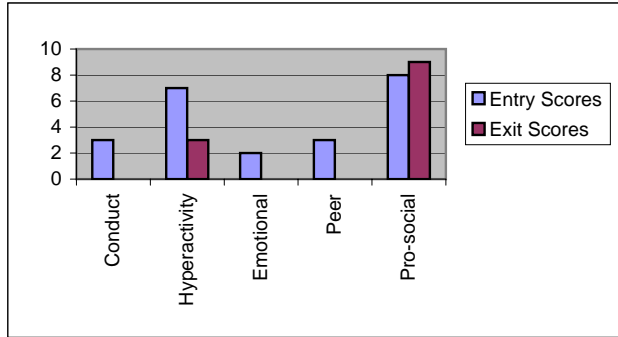
CHILD 2

	Entry Scores	Exit Scores		
Conduct	8	4		
Hyperactivity	10	10		
Emotional	3	0		
Peer	4	3		
Pro-social	4	5		
Attendance	16	=	94%	



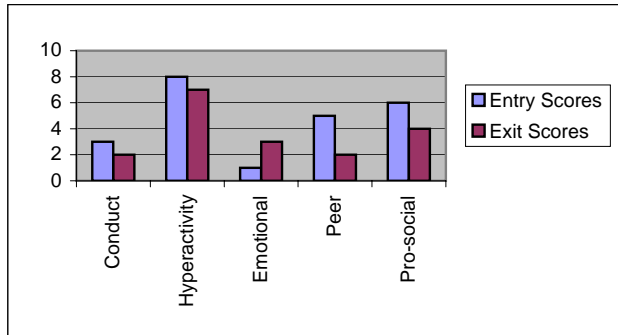
CHILD 3

	Entry Scores	Exit Scores		
Conduct	3	0		
Hyperactivity	7	3		
Emotional	2	0		
Peer	3	0		
Pro-social	8	9		
Attendance	13	=	76%	



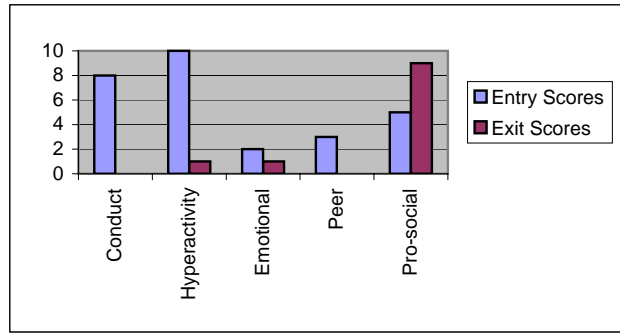
CHILD 4

	Entry Scores	Exit Scores		
Conduct	3	2		
Hyperactivity	8	7		
Emotional	1	3		
Peer	5	2		
Pro-social	6	4		
Attendance	17	=	100%	



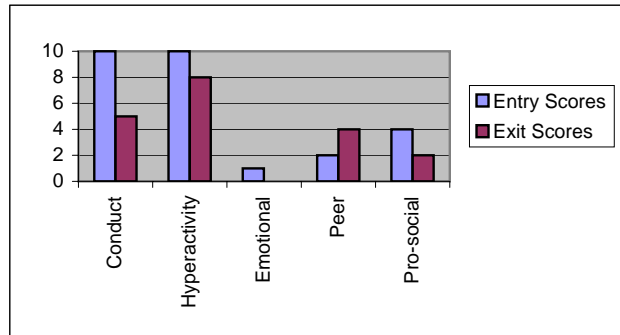
CHILD 5

	Entry Scores	Exit Scores	
Conduct	8	0	
Hyperactivity	10	1	
Emotional	2	1	
Peer	3	0	
Pro-social	5	9	
Attendance	16	=	94%



CHILD 6

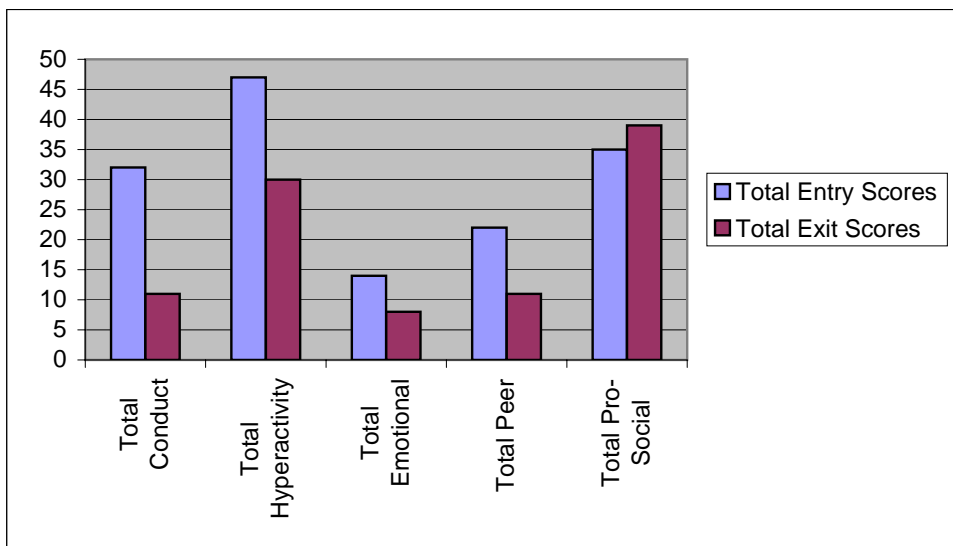
	Entry Scores	Exit Scores	
Conduct	10	5	
Hyperactivity	10	8	
Emotional	1	0	
Peer	2	4	
Pro-social	4	2	
Attendance	14	=	82%



Total Scores for the Group

Average Attendance 92 90%

	Total Entry Scores	Total Exit Scores	Reduced by	% Decrease	% Increase
Total Conduct	32	11	21	65.63%	
Total Hyperactivity	47	30	17	36.17%	
Total Emotional	14	8	6	42.86%	
Total Peer	22	11	11	50.00%	
Total Pro-Social	35	39	4		11.43%



|Largest % improvements in 'Conduct' and 'Peer' Category's